



Greetings from Paris. My last two weeks have been spent squatting at IRCAM in a small room with no windows, right next to some very loud photocopiers. Each day, I greet the receptionist whom I recently befriended, walk down two flights of stairs, and situate myself at a vacant desk within a particular lab whose director has mysteriously vanished for nearly past year. Last I heard, he was living in a trailer park outside of Shibuya.

This glamorous workspace has afforded me some useful time to take a break from research, and instead apply for some grants to get much-needed \$\$\$ for internal CuteLab infrastructure. For instance, only the realest CuteLab heads know about a small ThinkCentre located next to the couch by the window that runs a secret web server, accessible at <https://well.cutelab.nyc>. This computer was purchased by yours truly in 2019 from a hip young urbanite in Ridgewood through Pick Up The Flow (PUTF), way back when it was a small Facebook group.

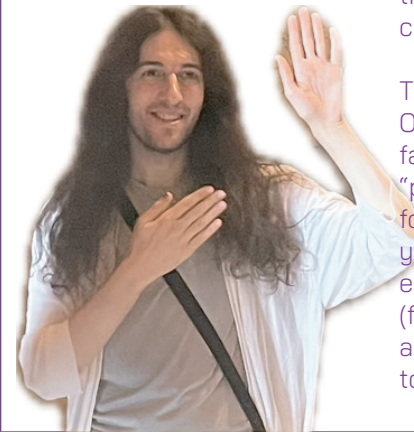
Five years later and now we have all these archival records from CuteLab-related events! So what better place for an archive? Stay tuned...

--- M.A.

# Op-Ed

## The "Op-Amp Op-Ed" by David Karp

In a world with so many dual opamp chips aimed at audio, it's hard not to stick with the classics out of exasperation: the ubiquitous TL072, the (usually) less noisy NE5532, the famously overdriven JRC/NRC4558. But in the past decade, it's become increasingly possible to find opamps with lower noise, lower distortion, and significantly better headroom without dishing out for the boutique Brown-Burrs. My favorite of this new generation is the OPA1678 from Texas Instruments (of calculator fame). Yeah, they are pricier than a TLOxx, and they do clip slightly differently as well, but they're still less than a dollar per chip. That's hard to beat when you're getting lower noise and rail-to-rail performance. Even in cases when I still use an older opamp for the clipping part of a circuit, I love using the OPA1678 for any subsequent tone and volume controls to give them a wider range.



TI also make a single-opamp version called the OPA1677. These are available in what has become my favorite shape (or more technically my favorite "package"): the SOT-23-5. To me, it's the perfect size for a single active component: small enough that you can fit one just about anywhere, but just big enough that it's still a breeze to hand solder (friendship ended with the SOT-363). And the asymmetrical pin arrangement makes it pretty hard to put them in backwards, which saves another

# Arts & Leisure

## Music - 10/05

Wilfrido Terrazas  
Madison Greenstone  
Rocío Días de Cossío

## Music - 10/12

Kari Watson  
and Alec Goldfarb  
& other friends

\$15 - NOTAFLOF  
Doors at 7:30pm  
Music at 8:00pm

## Music - 10/19

Luciana Rizzo  
& more TBD

## Music - 10/26

Quadrasonic Music by...  
+ Lisa Schonberg  
+ Jenn Grossman  
+ Mike Clemow  
+ Maysun  
+ Carnal Ex

Stay up to date by signing up for the CuteLab mailing list!

# Max's October Picks



...and the results are finally in!

### Top Five NYC Subway Stations of 2024

1. Broadway Junction
2. 82nd Street-Jackson Heights
3. Smith-9th Street
4. Bowling Green
5. Howard Beach-JFK Airport

### Top Five Paris Metro Stations of 2024

1. Porte des Lilas
2. Barbès - Rochechouart
3. Botzaris
4. Arts et Métiers
5. Quai de La Rapée

This year, Smith-9th tragically dropped down to 3rd place due to escalator renovations.

## Equations Of The Month

$$\text{lex} \leftarrow \mathcal{T} \leftrightarrow \text{PSh}(\mathcal{C}) \quad \text{The Grothendieck Topos}$$